

# THE COST OF THE SCHOOL DAY

## Voice network activities – asking everyone about costs

### Costs voting cards

**An activity to help your group find out more about the views of other people in your school, particularly those relating to school costs.**

We have three voting card templates to help you find out about costs in your school. You'll find all three in this pdf.

The voting card template will help you collect information from lots of people quickly. You could use it at lunchtime or breaktime or any time that you can speak to lots of people. Ask each person which of these school costs is most expensive or most difficult to afford and keep count of what people choose by making a tally under 'Votes'. The final box is for other suggestions people make. You can note these down on the back of the sheet.

The Christmas template has lots of empty boxes for you to write in Christmas costs in your school. Things like fayres, pantomimes, parties, teacher presents, Christmas jumper day, or anything else. Ask people which of these might be difficult to afford and keep count of what they choose by making a tally under 'Votes'. Remember to include a box for suggestions of things you might not have thought of. Note these down on the back of this sheet

You can add your own costs to the blank template and use it at any time during the year. In the boxes on the voting card draw and label or write down some of the costs in your school then use it in exactly the same way as you used the first and second one.

You can use these templates with lots of pupils in your school either by going round classrooms, during tutor time or PSHE, asking pupils to add their votes during break time in the corridors, or in the playground. You can also ask parents to use the voting cards at home.

Once you've collected everyone's votes, you can add them up to find out the most common cost worry, then rank them in order from highest to lowest priority. Can you put them into percentages?

This exercise will help your group understand whole-school priorities and which areas they might like to start addressing first.

The templates for this activity can be found on the next three pages of this pdf.

# school costs voting card



**UNIFORM**

**Votes:**



**FOOD**

**Votes:**



**TRIPS**

**Votes:**



**DEVICES**

**Votes:**



**LEARNING RESOURCES**

**Votes:**



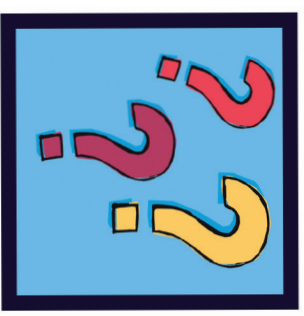
**CLUBS**

**Votes:**



**TRAVEL**

**Votes:**



**ANYTHING ELSE?**

**Votes:**

Use this voting card to ask about school costs. Ask which school cost is most expensive or most difficult to afford and keep count of what people choose by making a tally under 'Votes'. The final box is for other suggestions people make - you can note these down on the back of this sheet.

# Christmas costs voting card

**Votes:**

**Votes:**

**Votes:**

**Votes:**

**Votes:**

**Votes:**

**Votes:**

**Votes:**

In the boxes on this voting card draw and label or write some Christmas costs in your school - things like fayres, pantomimes, parties, presents, Christmas jumper day. Ask people which might be difficult to afford and keep count of what they choose by making a tally under 'Votes'. Remember to include a box for suggestions of other things you might not have thought of, you can note these down on the back of this sheet.

# school costs voting card

**Votes:**

**Votes:**

**Votes:**

**Votes:**

**Votes:**

**Votes:**

**Votes:**

**Votes:**

Use this voting card to ask about school costs. In the boxes on the voting card draw and label or write down some of the costs in your school which school cost is most expensive or most difficult to afford and keep count of what people choose by making a tally under 'Votes'. The final box is for other suggestions people make - you can note these down on the back of this sheet.