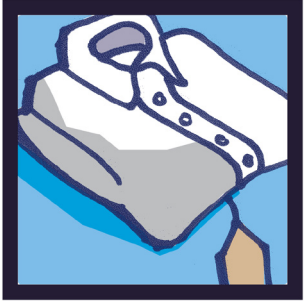


# school costs voting card



**UNIFORM**

**Votes:**



**FOOD**

**Votes:**



**TRIPS**

**Votes:**



**DEVICES**

**Votes:**



**LEARNING RESOURCES**

**Votes:**



**CLUBS**

**Votes:**



**TRAVEL**

**Votes:**



**ANYTHING ELSE?**

**Votes:**

Use this voting card to ask about school costs. Ask which school cost is most expensive or most difficult to afford and keep count of what people choose by making a tally under 'Votes'. The final box is for other suggestions people make - you can note these down on the back of this sheet.